



CHIRAG'S  
**Surya**  
*Residency*  
NAGURI - MANGALORE



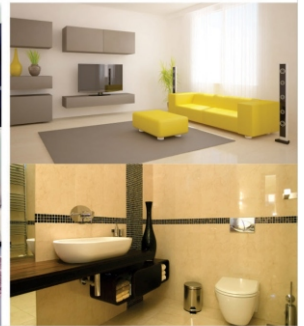
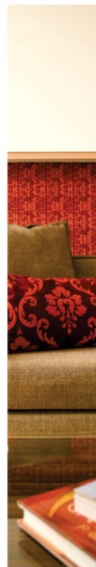


You wake up with a feeling of freshness! Your days are filled with happiness! You are residing in a distinct part of the city where life moves in a positive passion. Gone are the days when people preferred the heart of the city! It's a preference to find a better altitude and landscape to have one's priorities. A splendid way to celebrate life with modern lifestyles.

Chirag's Surya Residency" next to Naguri converging at kankanady is a choice you could make with your loved ones. A preference that would put at a advantage of possessing a lifestyle of your own in a scenic surrounding and within the close proximity of Mangalore City and its diverse business locations. While the place is connected to NH 75 which incidentally connects to kankanady on the other side, you are well connected to Nanthur, Kadri Hills, New Bus Stand and all the surroundings of the city. Which means all the Institutions, schools, business houses, etc are within your reach! Moreover you seem to enjoy the periphery of the city with its exhaustive shopping, eatouts and entertainment that it offers!

"Chirag Mangalore Builders" as the name personifies look for grand locations to offer their clients unique expressions of living styles while offering best in terms of modern amenities. The apartments are very much preferred investment for the Middle Class, Officers, Executives who wish to have a better living within the city landscape. Each apartment is planned with a well designed architectural ambience vastu compliant and with standard construction itineraries. A well poised inner ambience to celebrate life in all its magnanimity.

Your life gets into  
a new **celebration!**



#### HIGHLIGHTS

- Vitrified flooring for all rooms
- Anti skid ceramic tile flooring for Toilets
- Designer glazed tile wall dadoing for toilets and kitchen
- CP Plumbing fittings for toilets and kitchen
- Modular electrical switches with good quality wires
- Car parking at additional cost
- Polished granite platform with stainless steel sink for kitchen
- White colored sanitary ware (Hindustan / Parryware) in all toilets
- Putty finished emulsion paint to internal ceiling and wall
- Concrete interlock paving Car park, drive way and yard.
- Children's Play area, Party Hall & Fully equipped GYM
- Reticulated gas connection
- Solar System
- 2 Automatic lift with generator backup

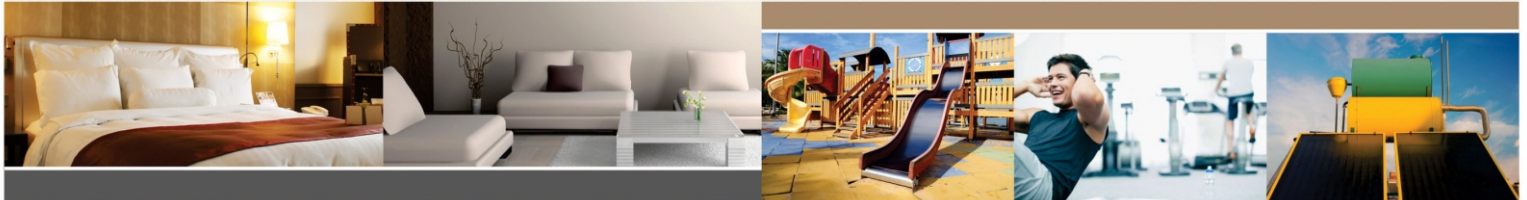
#### SPECIFICATIONS

- Fully R.C.C. framed structure
- Double coat exterior plastering with waterproof treatment
- Interlock paving for parking and open areas
- Front elevation as per architect's design
- Designer wood entrance door Frame finishing with melamine polish
- Good quality glazed tiles for toilet walls of full height
- White coloured commodes and wash basins in toilet
- Branded modular switches & Electrical fittings
- Wooden frames with good quality decorative flush door shutters for rooms & Concrete frames with fibrotech shutters for toilets & balconies
- Smooth finish interior wall plastering
- Water supply with borewell in addition to the corporation water supply.
- Laterite 8" outer walls and 4" solid block inner walls
- 2'0"X2'0" vitrified flooring of premium quality
- Anti skid 1'0"X1'0" ceramic tiles for toilet flooring
- Overhead water and underground sump tank with required pumps
- Generator backup for lift, common area & lighting for residential only
- Premium branded CP Fittings in bathroom & kitchen
- Powder coated aluminum windows with M.S. Grills



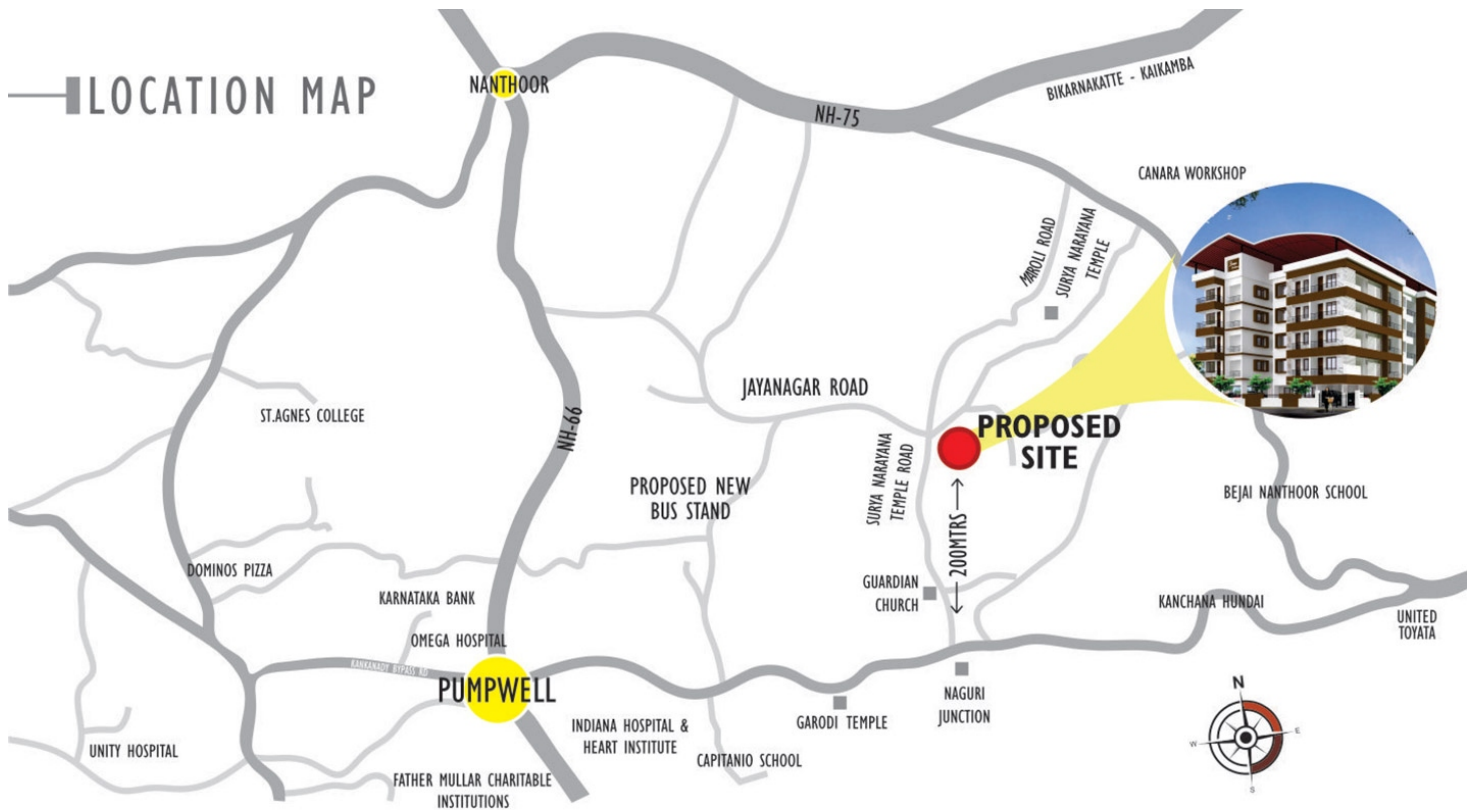


## TYPICAL FLOOR PLAN





## LOCATION MAP



## COMPLETED PROJECTS



**HIGH MANOR APARTMENT**  
Capitiano, Mangalore



**MANGALA GARDEN APARTMENTS**  
Jeppu Market Road, Mangalore.



**SAHARA RESIDENCY**  
Balmatta Road, Mangalore



**EAST END APARTMENTS**  
Jeppu Market Road, Mangalore.



**SAHARA MANSION**  
Bolar, Mangalore



**SAHARA SHILVIN**  
Pandeshwar, Mangalore.



**SAHARA HOMES**  
Near Mangaladevi, Mangalore



**SAHARA CLASSIC**  
Kadri Shivabag, Mangalore



**SHILPA PALACE**  
Upper Bendoor, Mangalore

## ONGOING PROJECTS



**CHIRAG PALACE**  
Surathkal



**CHIRAG'S BALLAL SANIL PLAZA**  
Nagori, Nr. Kankanady Rly St.



**CHIRAG'S OCEAN PEARL**  
Ashoknagar, Mangalore

### BUILDERS & PROMOTERS



**Chirag Mangalore**  
Builders and Developers Pvt Ltd.

**Shilpa Palace**  
Opp Colaco Hospital, Bendoorwell,  
Mangalore - 575 002  
Ph : +91 824 - 2212465,  
Mobile : +91 9483457923,  
9483844888, 8722199333  
Email : [chiragbuilders@yahoo.com](mailto:chiragbuilders@yahoo.com)  
Website : [www.chiragbuilders.com](http://www.chiragbuilders.com)

### ARCHITECTS



**Concept: Evolve**  
City Gate, Kadri Toll gate  
Mangalore 575 002  
Ph: 4278895, 4274408  
email: [conceptevolve@gmail.com](mailto:conceptevolve@gmail.com)

### Consulting Structural & Civil Engineers



**BHAGYAXMI CONSULTANTS**  
Consulting Structural & Civil Engineers  
II Floor, Balmatta Complex, Near Juice Junction, Balmatta,  
Mangalore 575002. Email: [maruthiblc@gmail.com](mailto:maruthiblc@gmail.com)